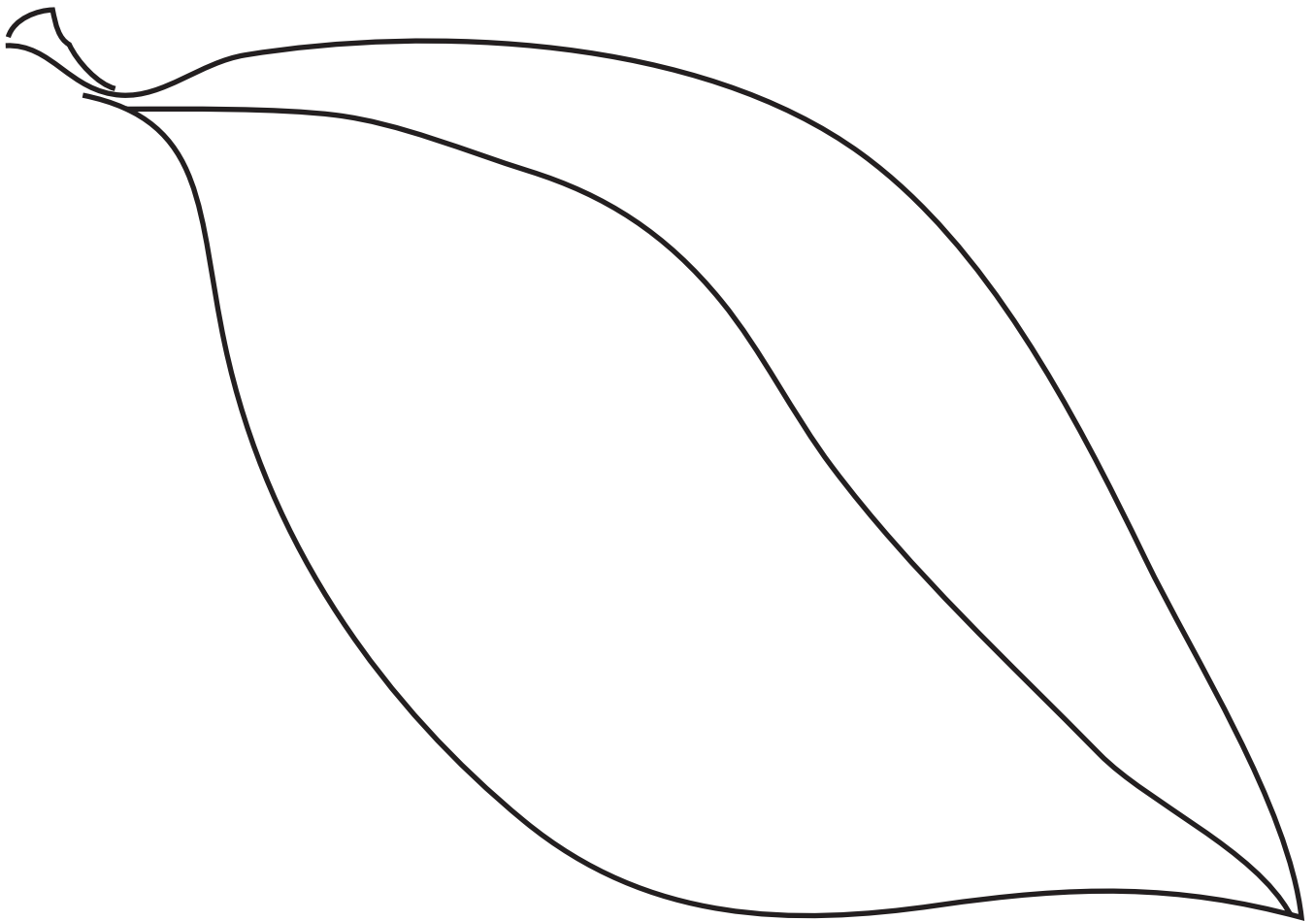


### Class survey - ask everyone in class how they got to school today.

Colour in and cut out the leaf below - attach it to a tree trunk on a wall display to make one big tree for the whole class, each pupil has their own leaf.

Colour in your leaf **green** if you walked, took the bus or cycled today.

Colour in your leaf **brown** if you came to school by car today.



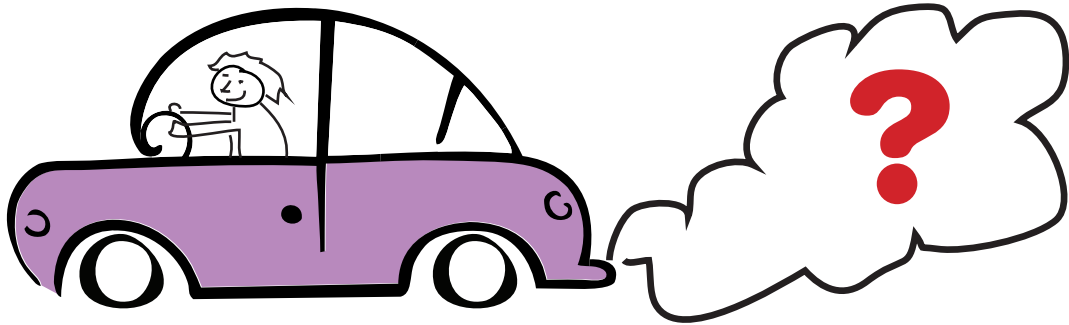
### How **Green** is your tree?

Repeat this exercise during the Translink Travel Challenge to see if you can **Green Your Tree!**



## ICT Research

Can you find out what dangerous gas comes out of car exhausts?



Look up this gas and find out why it is damaging to the environment?

Write your answer here:

A large dashed rectangular box intended for the student to write their answer.



## Key Stage 2 - Transport Worksheet

### How has travel changed over time?

Ask your Parents or Grandparents how they travelled to school;  
draw a picture of the answer:



How do you travel to school? Draw a picture :



## Key Stage 2 - Transport Worksheet

Why do you think travel has changed over time? Is it good or bad? Talk about it with your class.

How do you think children in the future will travel to school?

Design the perfect future vehicle – **remember to look after your tree!**

What will be important in this new vehicle? Add labels to show your ideas.

Make a model of your vehicle using recycled materials and display the models around the class.



## Key Stage 2 - Transport Worksheet

### Code Breaker - What are the secret transport messages below?

1	2	3	4	5	6	7	8	9	10
a	b	c	d	e	f	g	h	i	j
11	12	13	14	15	16	17	18	19	20
k	l	m	n	o	p	q	r	s	t
21	22	23	24	25	26				
u	v	w	x	y	z				

Use the numbers to help you break the code. Each number represents a letter from the alphabet:

3,1,18,19    3,1,21,19,5    16,15,12,12,21,20,9,15,14    1,14,4    8,1,18,13

---

14,1,20,21,18,5

---

23,1,12,11,9,14,7    9,19    8,5,1,12,20,8,25    1,14,4    8,5,12,16,19    14,1,20,21,18,5

---

20,8,5,18,5    1,18,5    20,8,9,18,20,25    13,9,12,12,9,15,14    13,15,18,5    3,1,18,19

---

15,14    20,8,5    18,15,1,4,19    14,15,23    20,8,1,14    23,8,5,14    13,25

---

7,18,1,14,4,16,1,18,5,14,20,19    23,5,18,5    1,20    19,3,8,15,15,12

---

