

REDUCING CONGESTION



DRIVING ECONOMIC GROWTH



ENHANCING THE ENVIRONMENT



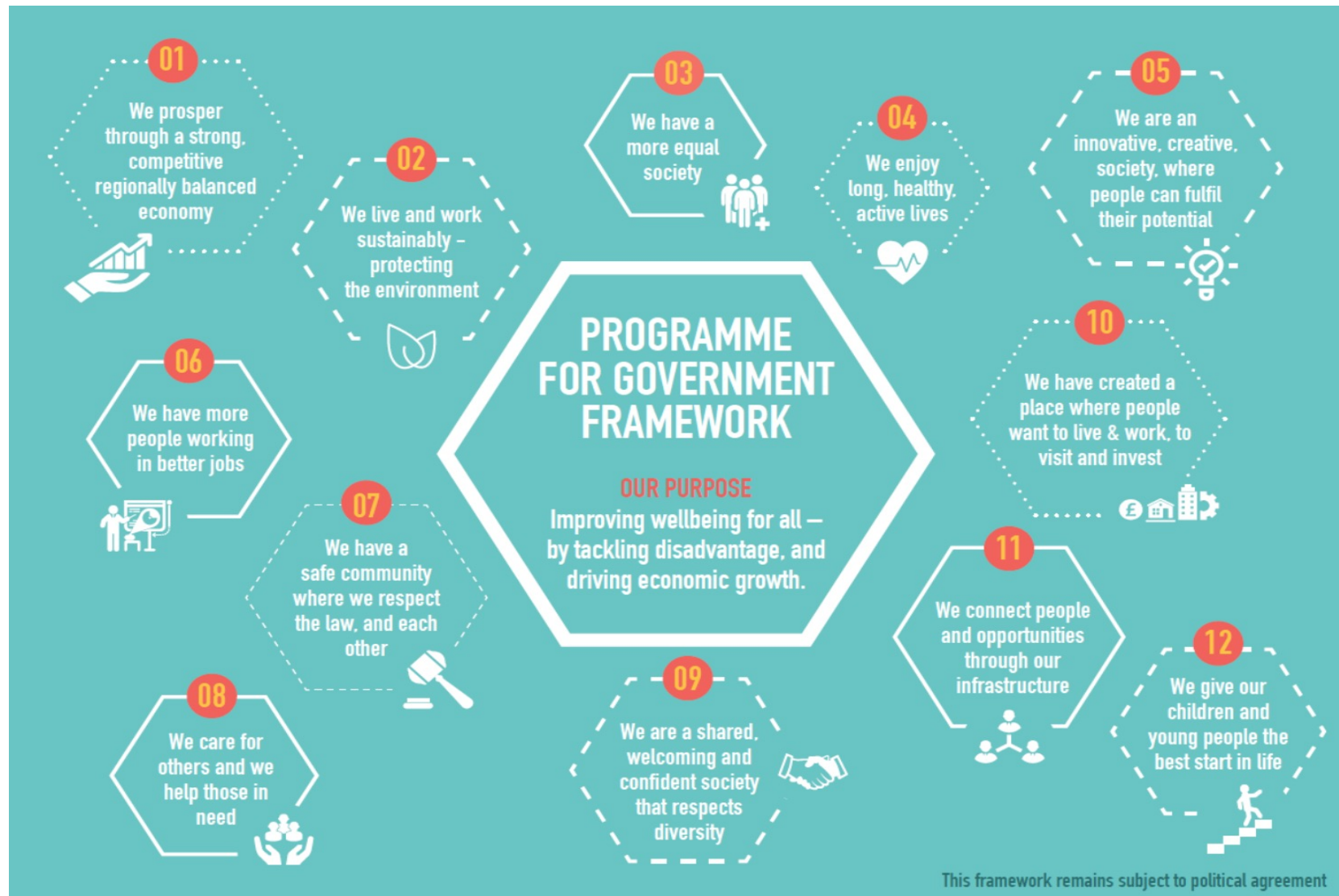
CREATING A HEALTHIER REGION



SUPPORTING SOCIAL INCLUSION



CONNECTING COMMUNITIES



Translink – By Numbers

- **4k staff** – one of largest employers in NI
Supporting over 6k jobs in NI
- **Operates 13k services every day**
300k passenger journeys per day
- **Maintains 1,400 buses and trains**
44m miles per year
- **Maintains over 80 bus and rail stations & halts**
8k P&R spaces
- **Maintains a £3bn railway asset**
300+ miles of rail track and over 1600 civil structures



Public Transport delivering for Northern Ireland

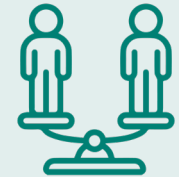


Supports a greener environment



Access to employment, Education & healthcare

Public transport delivering for Northern Ireland



Reduces isolation



Supports economic growth



Enhances health



Advances the transition to net zero